



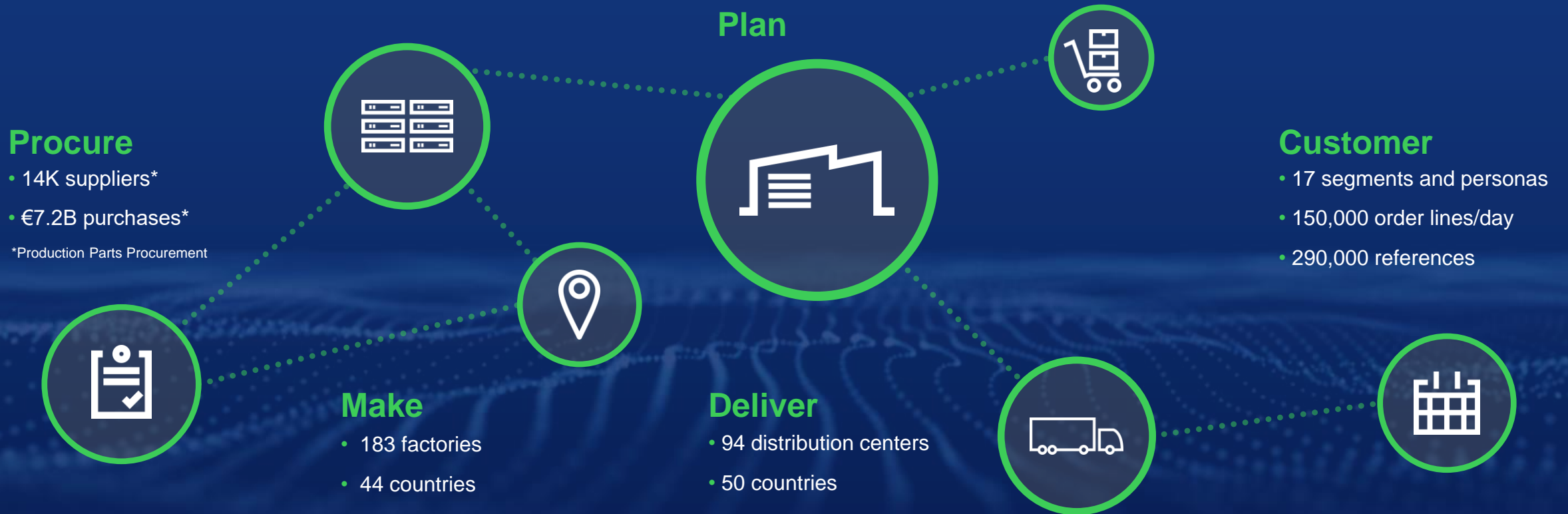
Smart Food Factory – how to approach digital transformation?

An applied approach to one of the Mega Trends in the industry

View on Schneider Electric - not as your supplier but as a manufacturing company



Global Supply Chain



80,000 employees in Supply Chain

By end 2020

It is not a question of “if“ but of “how“ and “how fast”



“What if we don’t change at all ...
and something magical just happens?”

EcoStruxure™ Smart Factory & Distribution Centers

A deployment plan that allows us to think big, act small & scale fast



Fast Scaling



GARTNER'S GSC TOP 25 RANKING

— Schneider Electric Position



The Gartner Global Supply Chain Top 25 for 2022



© 2022 Gartner, Inc. and/or its affiliates. All rights reserved. Gartner is a registered trademark of Gartner, Inc. and its affiliates.

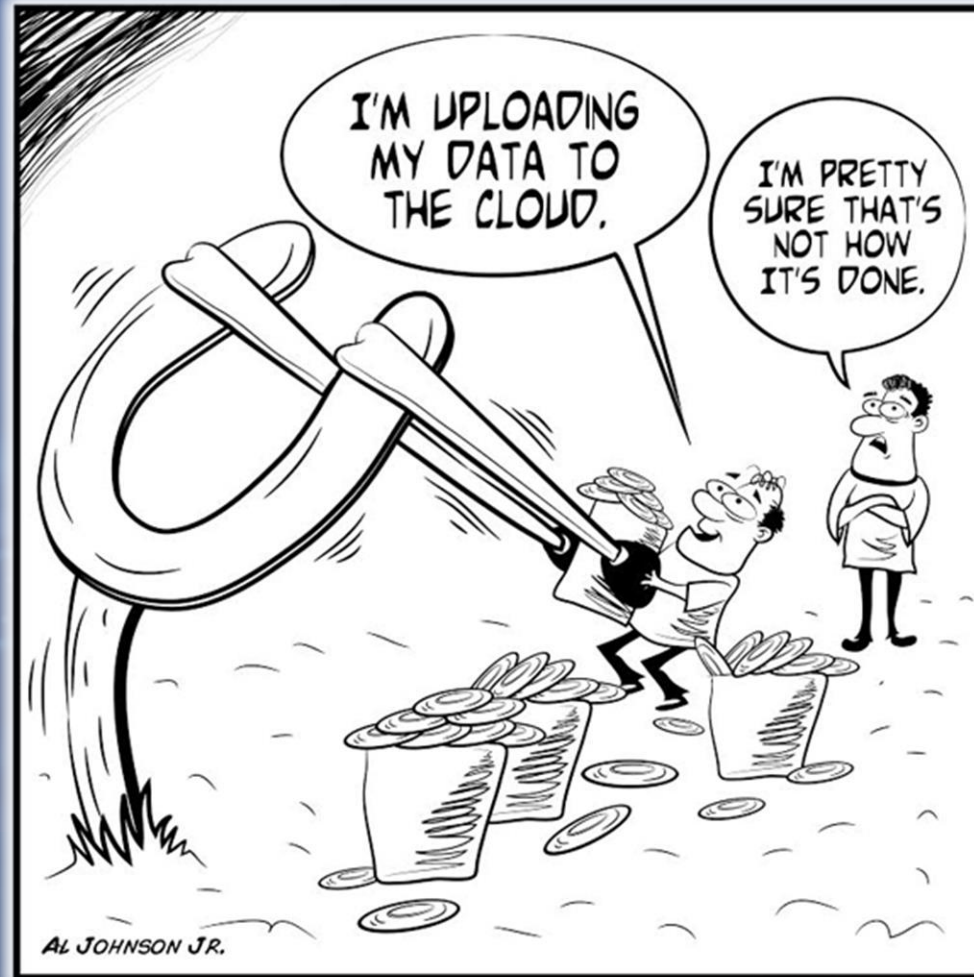
Gartner



Approx. 10 sites recognized as Digital Lighthouses by the World Economic Forum (France, USA, Indonesia, Mexico, China, Singapore, India...)

Getting it all digital and put it in the cloud?

Digitalisation is more than just applying some AI on data in the Cloud or some isolated use cases!

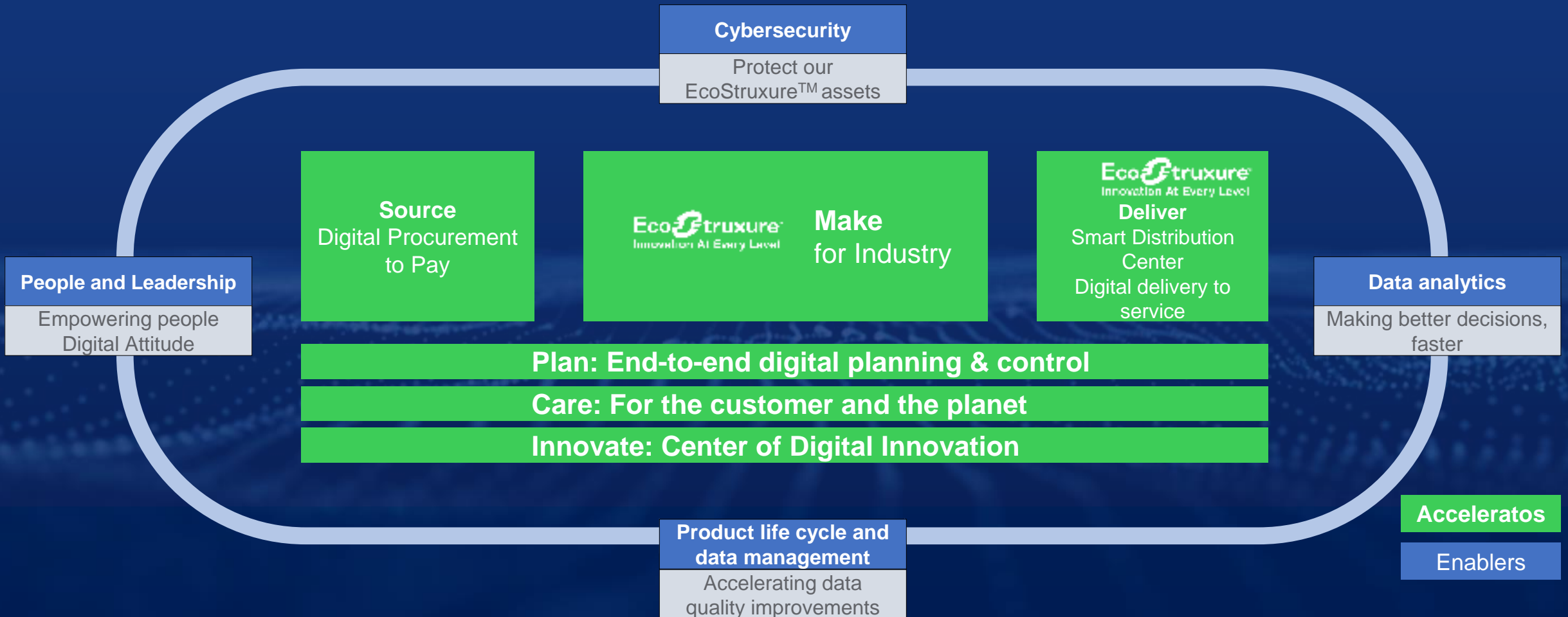


©CloudTweaks.com

It is a full transformation process that needs to be managed and governed to be successful

Tailored, sustainable, connected supply chain 4.0

Digitalisation to empower our teams, improve customer experience and end-to-end operational efficiency



Global Program with decentralized leadership



**Governance
Guidelines
Standardization**

Program



+



+



Program

Software

Data

IoT / Technologies

**Benchmark
Innovate
Deploy**

Regional

20



**Subject matter experts
from all geographies**

**Innovate
Deploy**

Factories

80



Smart Factory leaders

Build the Digital applications portfolio

And increase it continuously



Pilots



Standardize



Scale



Business need
Regional initiative
Measurable results

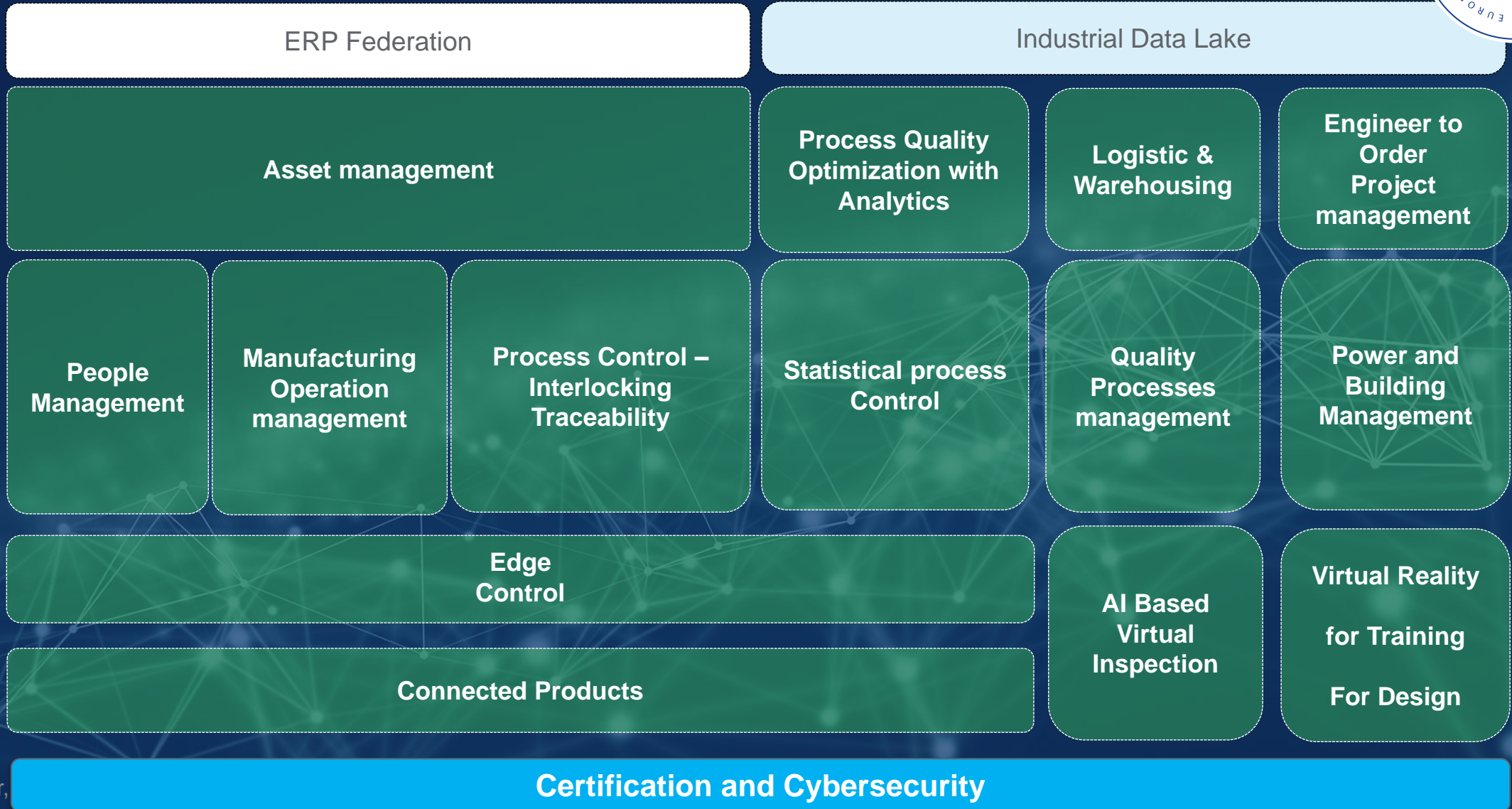
Selection
Standard Framework
IT / Procurement
Line of Business

Diagnosis per site
Training

Agile Mode – 3 Months Horizon

Project Mode

EcoSystem of 100 solutions deployed at scale



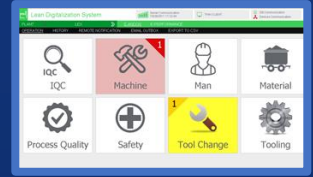
Eating our own food – examples for Ecostruxure solutions



Resource Advisor
Energy and sustainability data visibility.

Power Advisor
Performance and power reliability.

AVEVA Lean Digitization System (LDS)
Performance, Andon, work order, Kanban, work instructions.



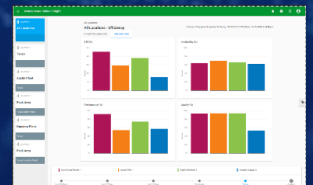
Power Monitoring Expert or Facility Expert*
Energy optimization.
* for sites >1GWh/yr

AVEVA Process Management System – Wonderware System Platform



Maintenance AVEVA Enterprise Asset Management (EAM)

AVEVA Insight From IIoT to analytics



Augmented Operator Advisor
Maintenance and settings with in-hand information.



Empowered employees are leading the digital transformation



Enabler: People & leadership



Competencies of the future

- Evolving skillset (hard and soft)
- Digital technologies all pervasive
- Increased focus on analytics driven by new technologies



Constant learning culture

- Prepare future adaptations through constant learning experience for blue-collar workers
- Technology solutions offering easy access



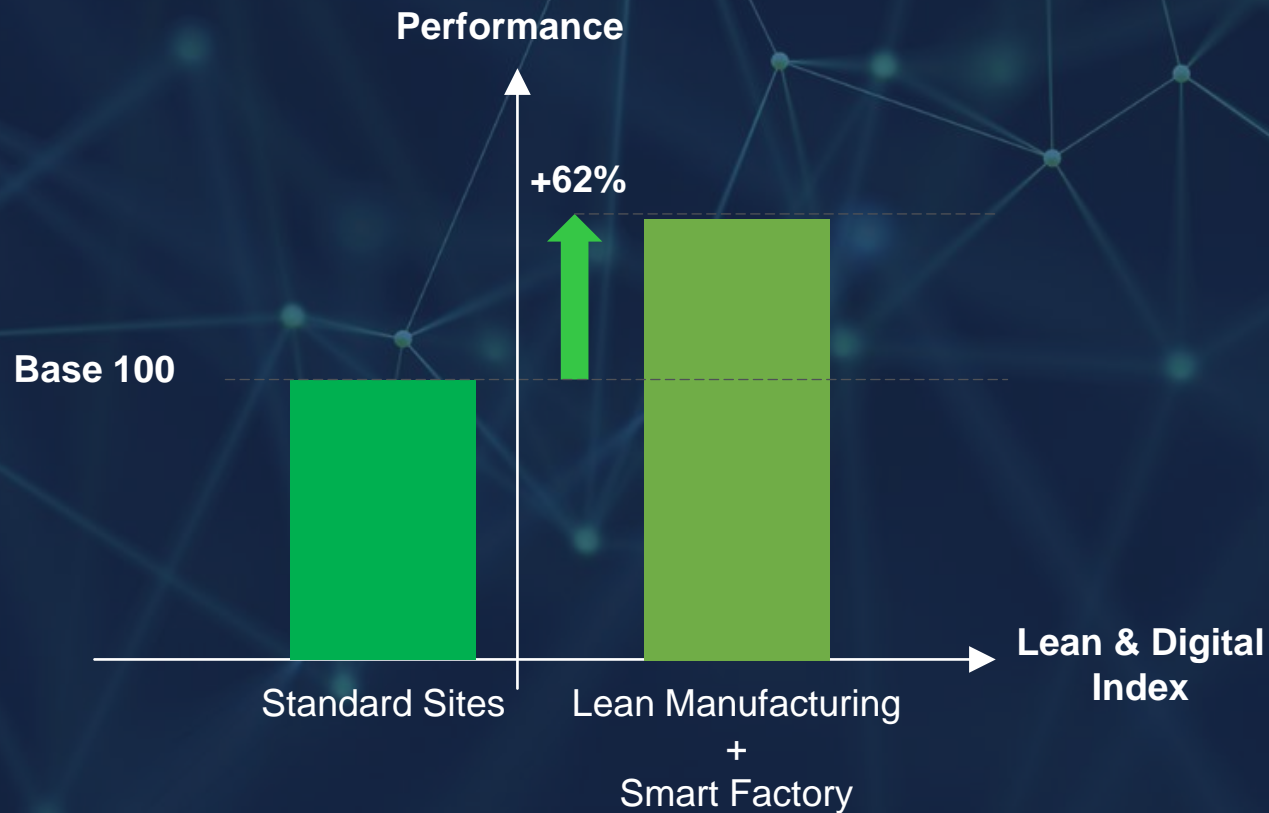
Leadership in supply chain of the future

- Higher empowerment of blue-collar workers through digital – direct link with suppliers to share and manage quality issues
- Management transformation: from technical to coaching skills

Performance delivered by the deployment



Measure in 2020



Concrete Benefits

A typical overall payback is **1.5-2 years**, specifically*

Energy Efficiency: average -30% cost saving.

Productivity: average 30% CapEx reduction (engineering and commission); 28% OpEx reduction (maintenance costs); 22% equipment availability increase

Reliability: average 15% quality issues reductions

Safety: average 20% workforce safety improvements

Sustainability: average 20% CO2 footprint reduction

Perimeter: based on financial, lean audit and digital index data from 200 sites

*: based on both customer projects & Schneider own entities

What could be a typical Use Case for Cleaning



We make our know-how in digital transformation and the CPG Industry available for our customer



NaOH Additions into Deionised Water

ProLeiT
by Schneider Electric

72 ms/

ery
ve d
oise
ctor

OptiCIP

Sequences: FAB / Fromage, PASTO, DOO

Water Consumption LCP: 173, 2170

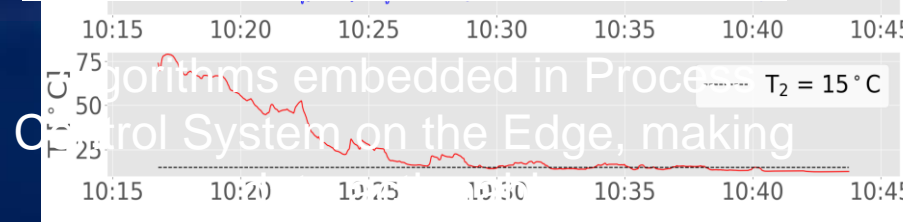
BB07 - Tank F25 / MENU 5 (jousk 27 mars 2014 07:09:52)

VOLUME used				CAUSTIC INlet				ADD INlet						
	Unit	Measure	Golden	Coef		Unit	Measure	Golden	Coef		Unit	Measure	Golden	Coef
Total sending	L	12621			0-Temperature	k	22.0	17.17	20.91	0-Temperature	k	23.21	19.68	19.68
Total returning	L	12630			1-Conductivity	k	6.84	6.65	18.06	1-Conductivity	k	13.19	12.05	12.07
Clear water sending	L	2637			2-Flow	k	15.65	15.63	18.06	2-Flow	k	11.25	12.05	12.07
Recovery water sending	L	1499			3-Temperature	mm	15.23	15.17	18.06	3-Temperature	mm	15.18	14.15	14.03
Caustic sending	L	4255												
Caustic returning	L	3554												
Add sending	L	4258												
Add returning	L	3233												

Golden CIP

Conductivity mS/m

Innovative Sensor
from partner 4T2



Advanced Data Analytics at the Edge
and in the Cloud to optimize and to
benchmark different sites

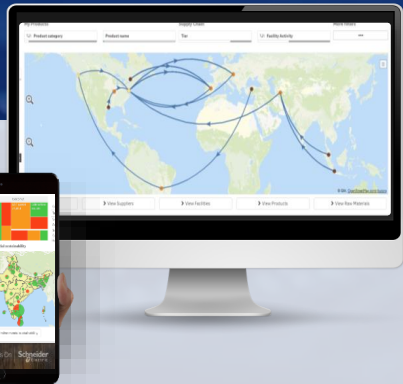
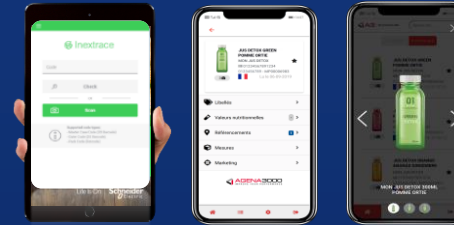
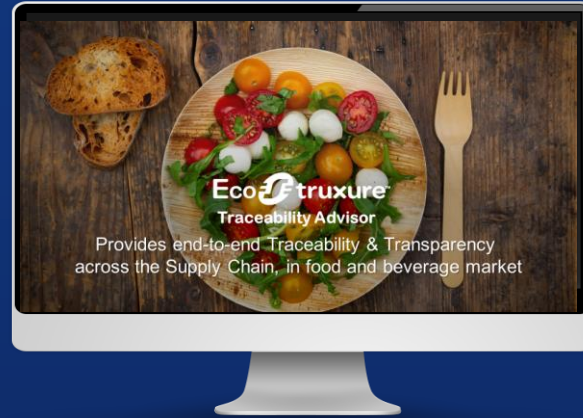
What could be a typical Use Case beyond cleaning and beyond the site



Ecostruxure Traceability Advisor

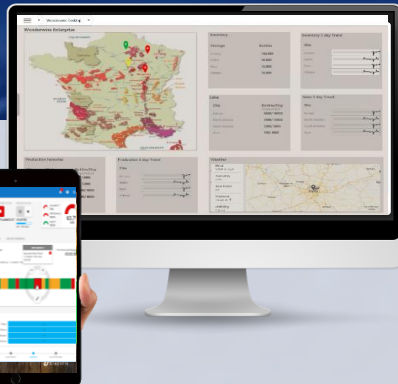


Compliant solution



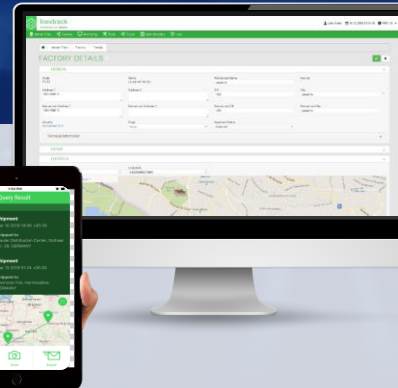
Origin Module

- Map your suppliers & identify risks
- Check certificates compliance
- Ensure a credible transparent supply chain



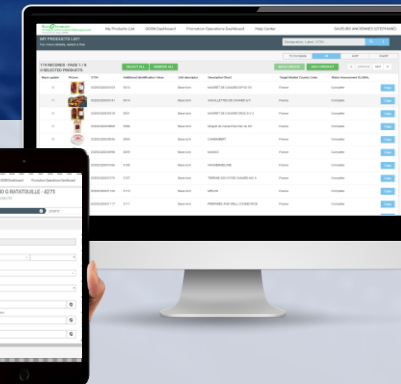
Digital solutions for the plant

- Plant traceability is a prerequisite in this journey
- Paperless solutions for your plant **including CIP data**



Track & Trace Module

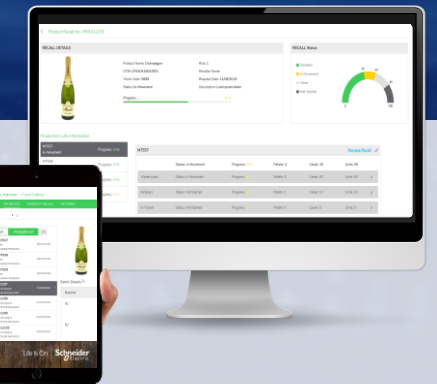
- Anti-Counterfeiting
- Digital tax verification
- Supply chain optimization
- Events tracking
- Inventory management **including CIP tracking**



PIM Module

Product Information Management

- Your single source of truth and trust for your product data
- Increased data accuracy and availability
- Operational efficiency: reduction in labour costs and time to market



Food Safety Module

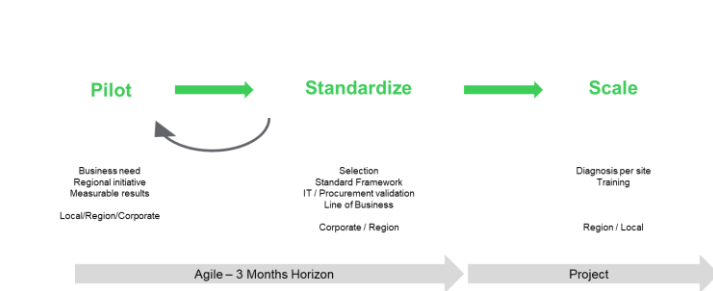
- Save time in recalling your products in the supply chain
- Cost savings in product recall batch sizes
- Cost savings on insurance premiums

Summary: Smart factory program – some guidelines for Speed

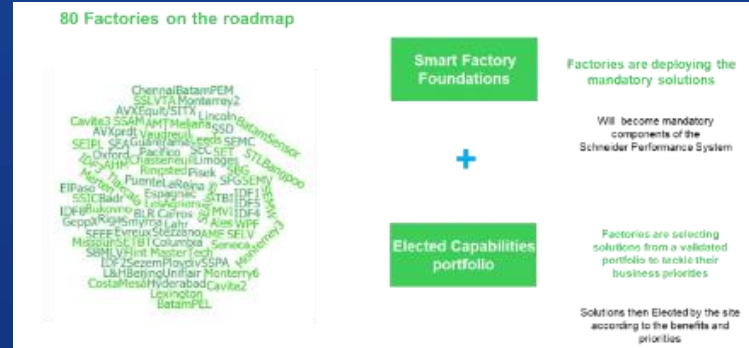


A defined process

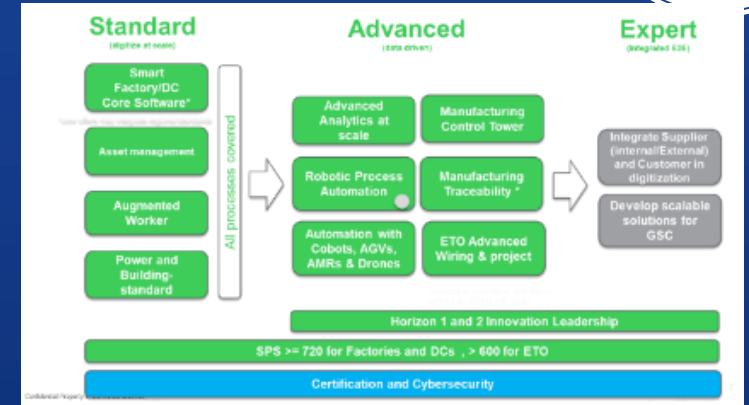
Define standard solutions to be deployed



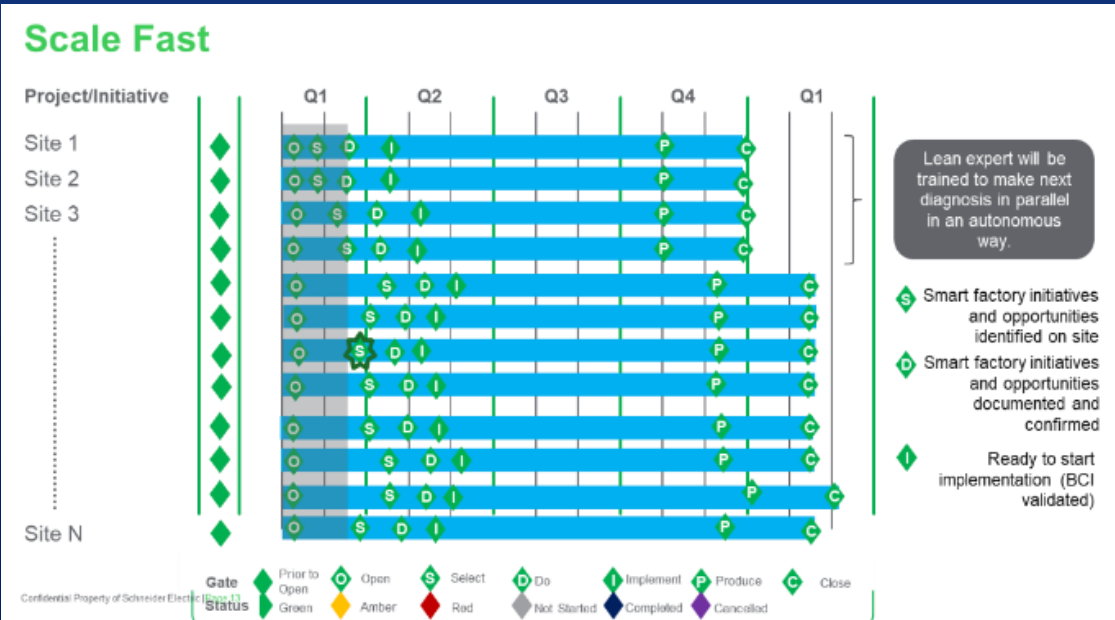
A solution catalog



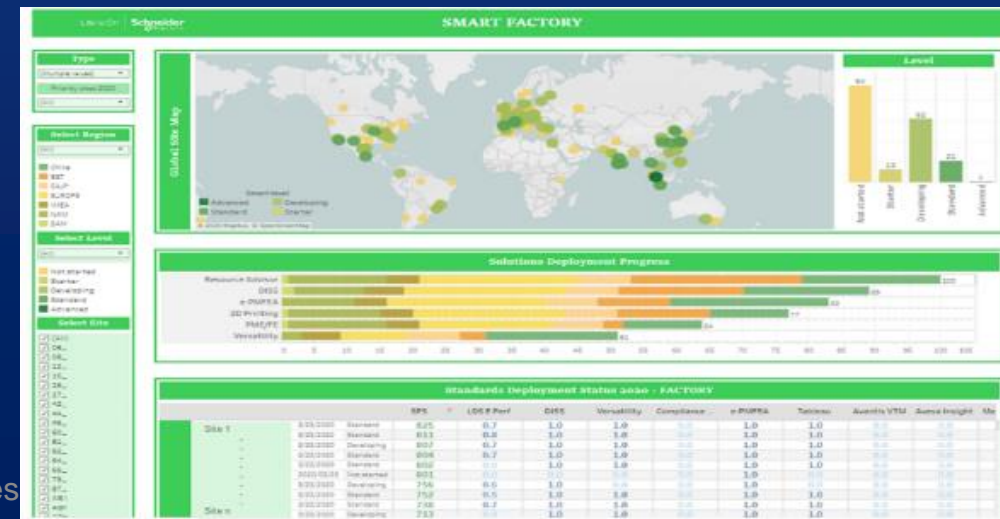
A factory ranking



Project overview per factory

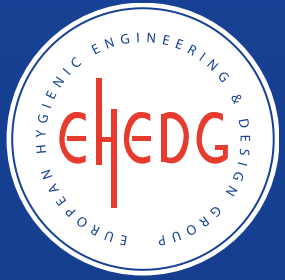


Result tracking per factory / regions



... and don't forget the people and the right organization!

Thank you for your attention!



Our Purpose:

Empower all to make the most of our energy and resources bridging progress and sustainability. We call this **Life is On.**

Our Mission:

Be your digital partner for Sustainability and Efficiency

Our Vision:

Improve flexibility, traceability and sustainability of your operations across the whole supply chain.