



Next Level of Hygienic Performance

Tetra Pak – Vjeko Begic & Fredrik Hansen

The Challenge

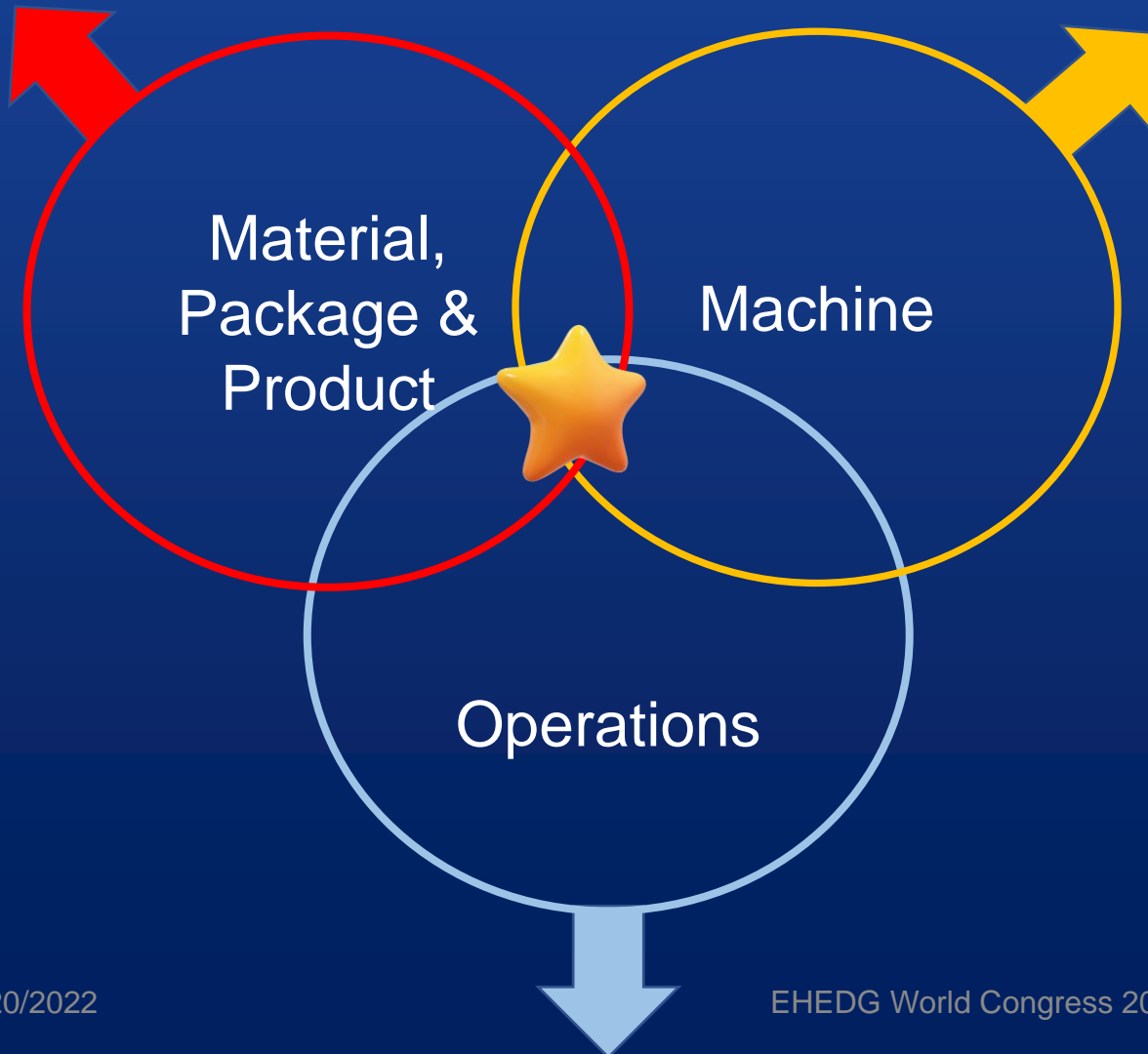
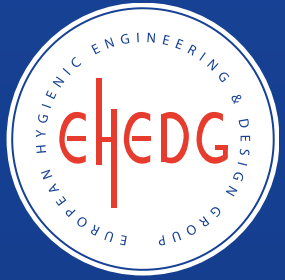


200 000 000 000

99.99X%

99

More important than ever



Material - examples:

- New material structures for sustainability
- Advanced closures
- New liquid food categories
- Advanced formulations of products

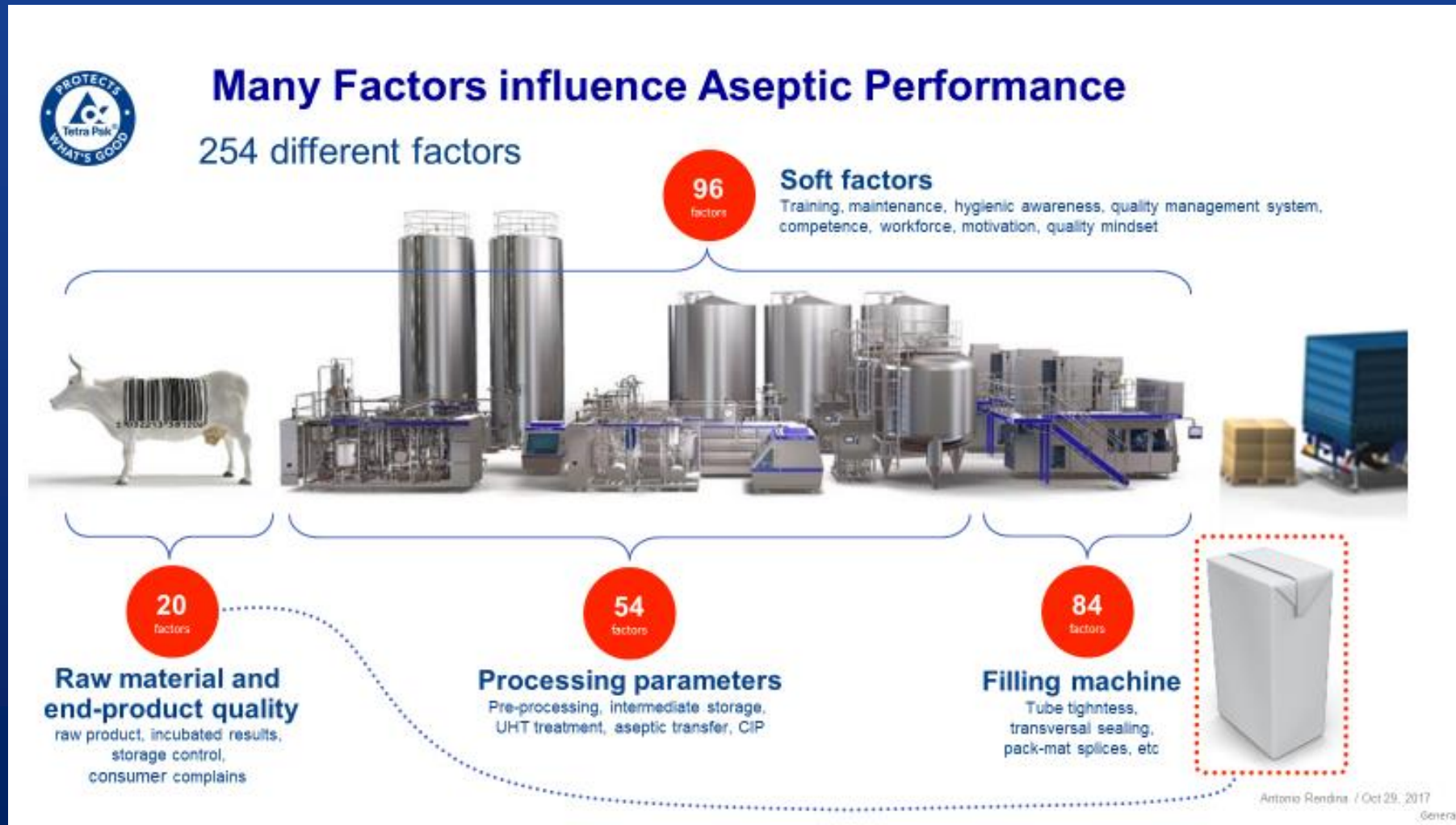
Machine - examples:

- High capacities (40 000 p/h)
- Higher flexibility, complex shapes
- Increased number of different SKUs
- Higher OEE

Operations - examples:

- Cost reductions
- Labour scarcity & competence
- Increased number of different SKUs
- New Producers

Aseptic Technology is Fantastic but....

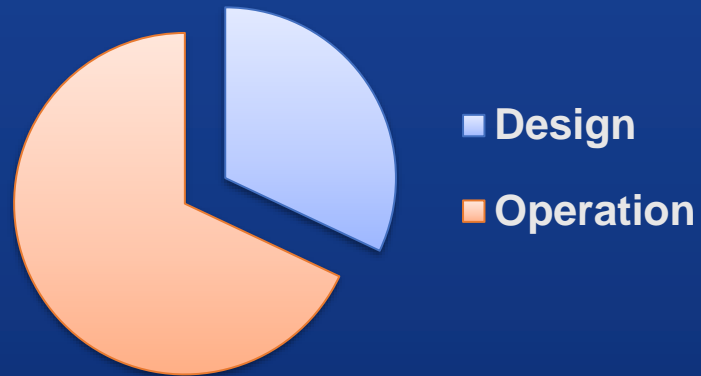


Every Instrument on the Right Note



What Goes Wrong?

Root cause areas



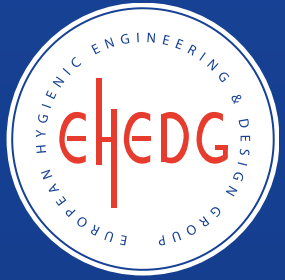
Adressing operational mistakes is the best "bang for the buck"??



Design must be changed in a way to better support operation (and solve design issues)



The Desired State



- The operator actions & decisions shall not impact system performance – system either OK or Not OK
 - In case of wrong or missing action – crystal clear feedback
- Impact of wrong or missing maintenance shall be eliminated— system either OK or Not OK
 - In case of wrong or missing action – crystal clear feedback



What can we do?

The Solution – from Autonomous Vehicles

- Level 0 – No Driving Automation
- Level 1 – Driver Assistance
- Level 2 – Partial Driving Automation
- Level 3 – Conditional Driving Automation
- Level 4 – High Driving Automation
- Level 5 – Full Driving Automation

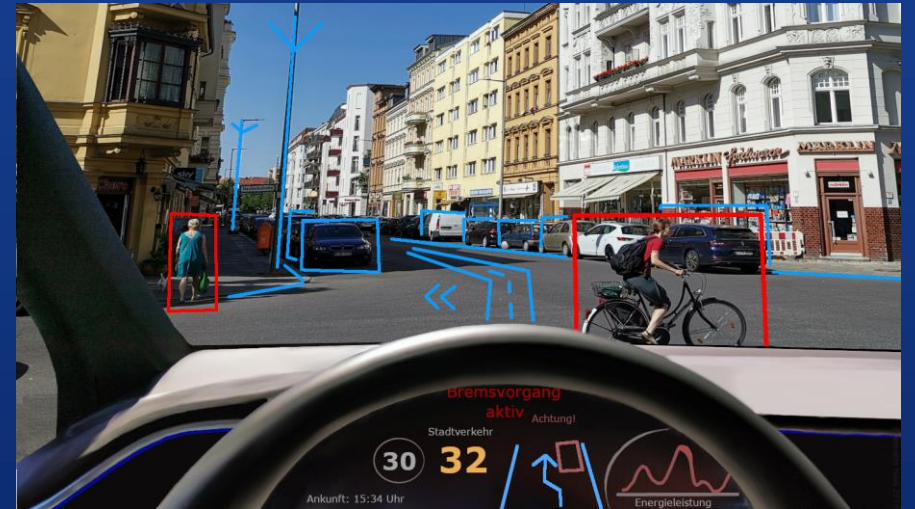


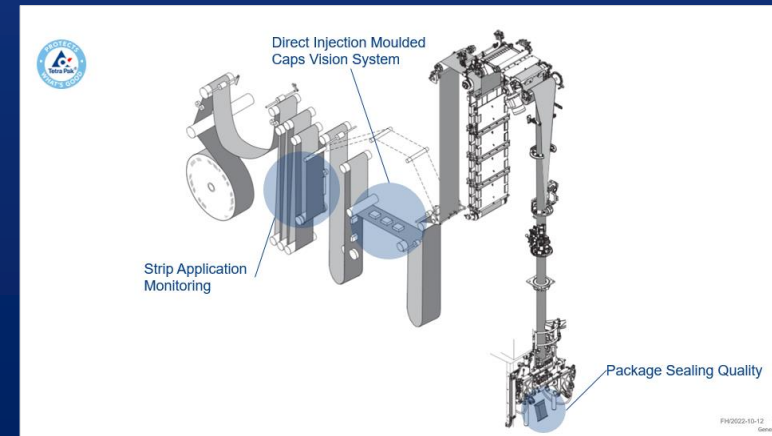
Illustration by [Eschenzweig](https://www.eschenzweig.com/)
<https://creativecommons.org/licenses/by-sa/4.0/deed.en>

Current system functions are typically a mix – from 0 to 4



Examples

From very simple to "science fiction"

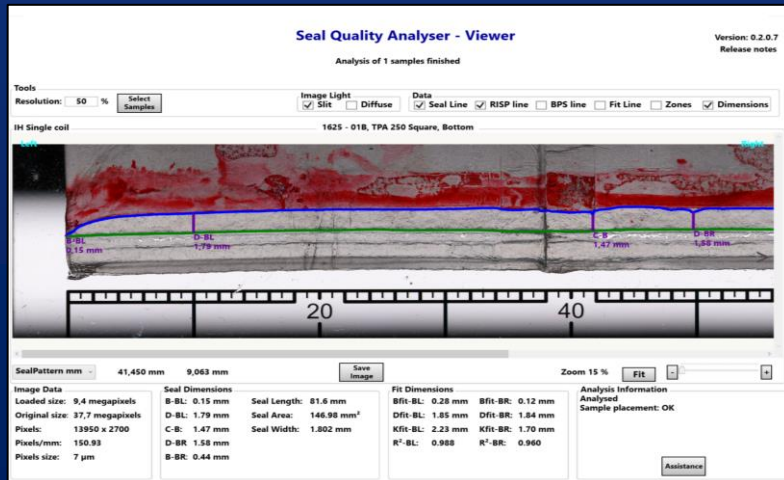


Seal Quality Analyser (SQA)



Figure 14: SQA – Recorder camera rig

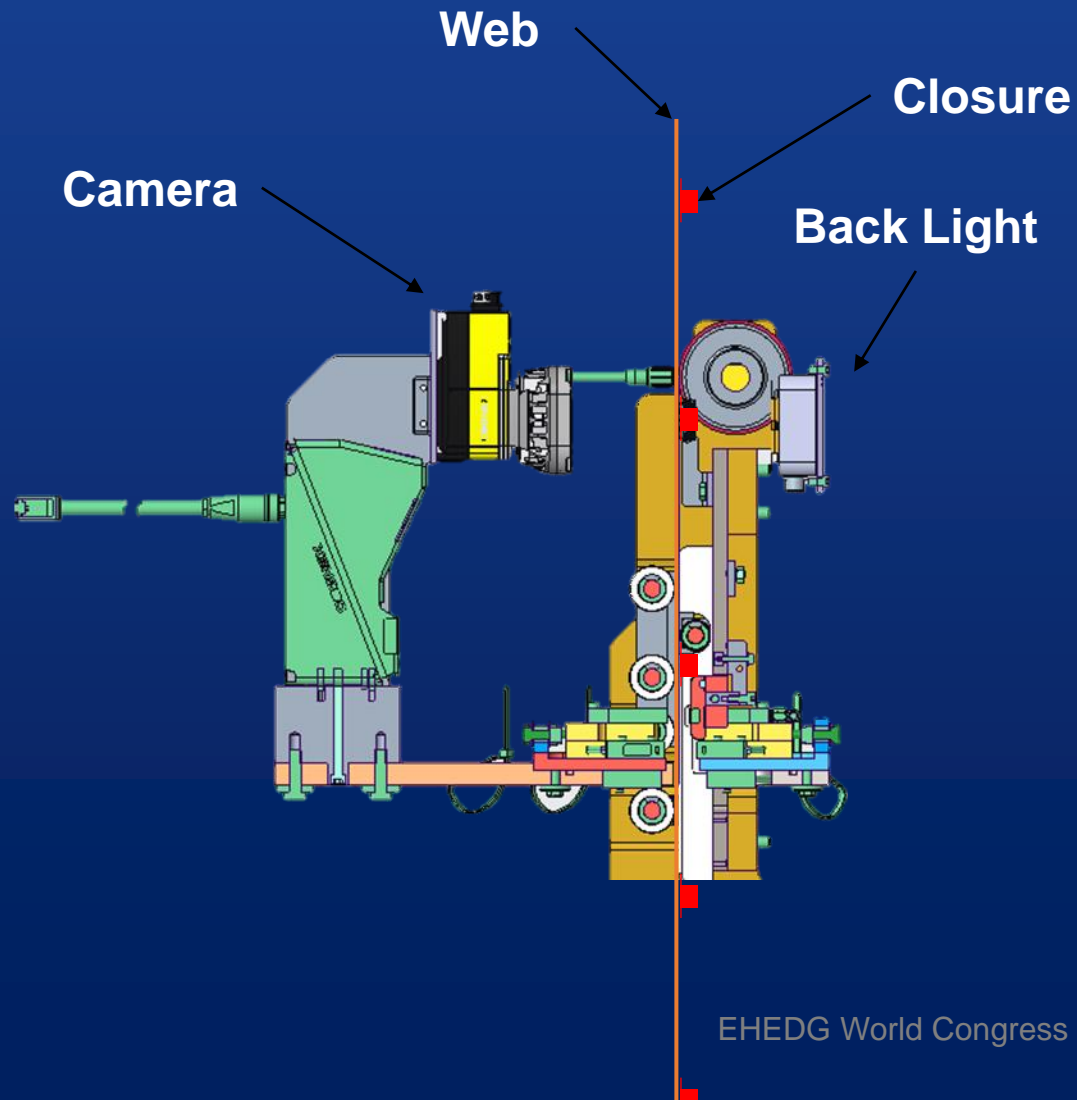
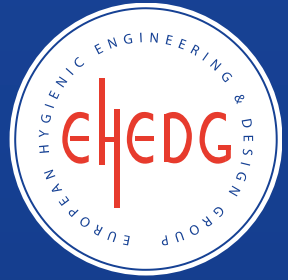
- SQA – Recorder
 - Records the dissolved Transversal Seal
 - Stitches several pictures into one high resolution picture



- SQA – Viewer
 - Performs image analysis
 - Visualizes the B-, C- and D-dimensions

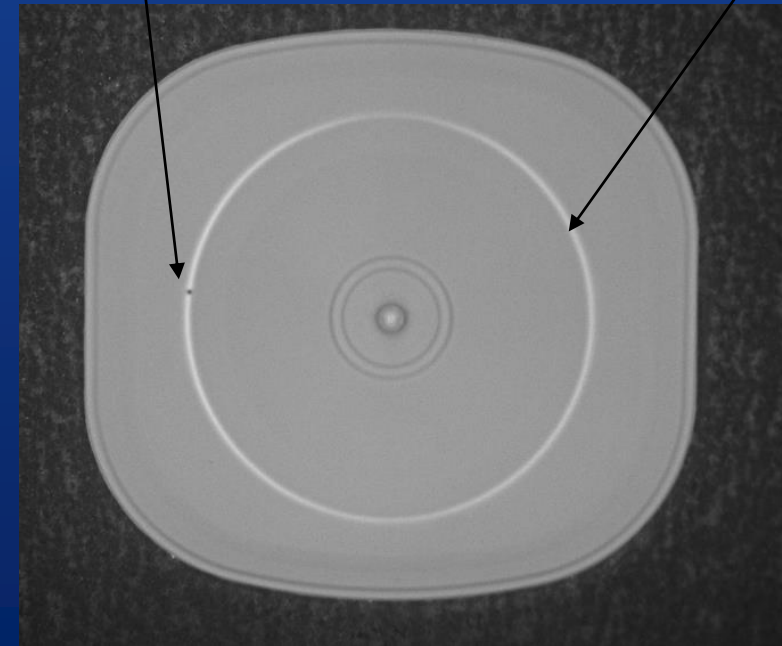
A New Level of In-line Quality Control

Pilot tests results in >50% reduction of consumer complaints



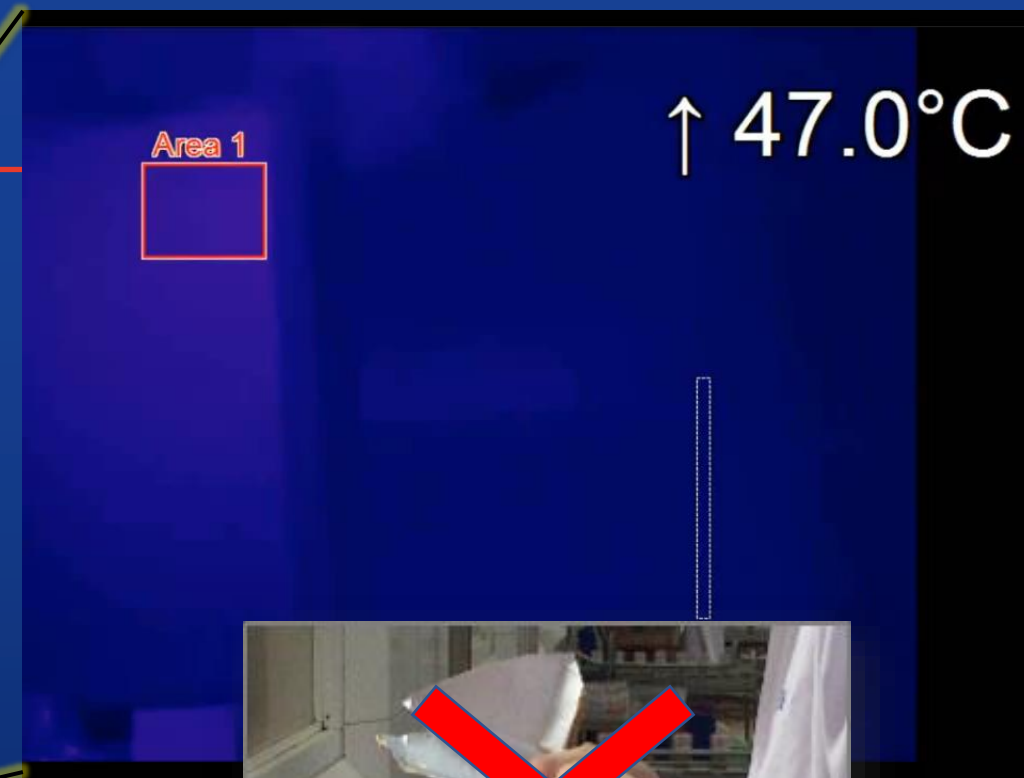
Black spot
($\varnothing \geq 0.12$ mm)

Bright membrane
(thickness 0.19mm)



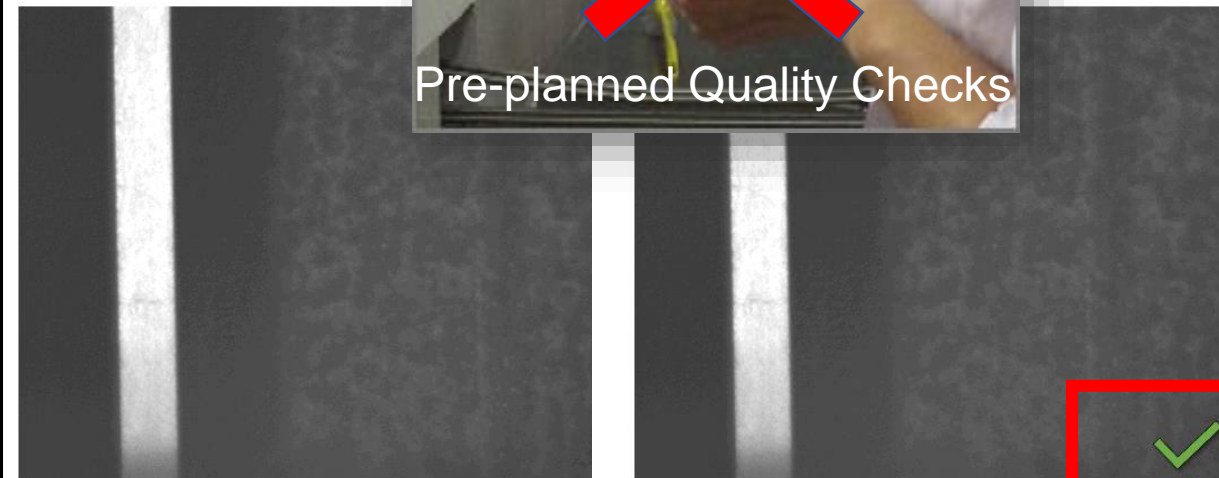
SA Quality Attribute

In line failure mode detection

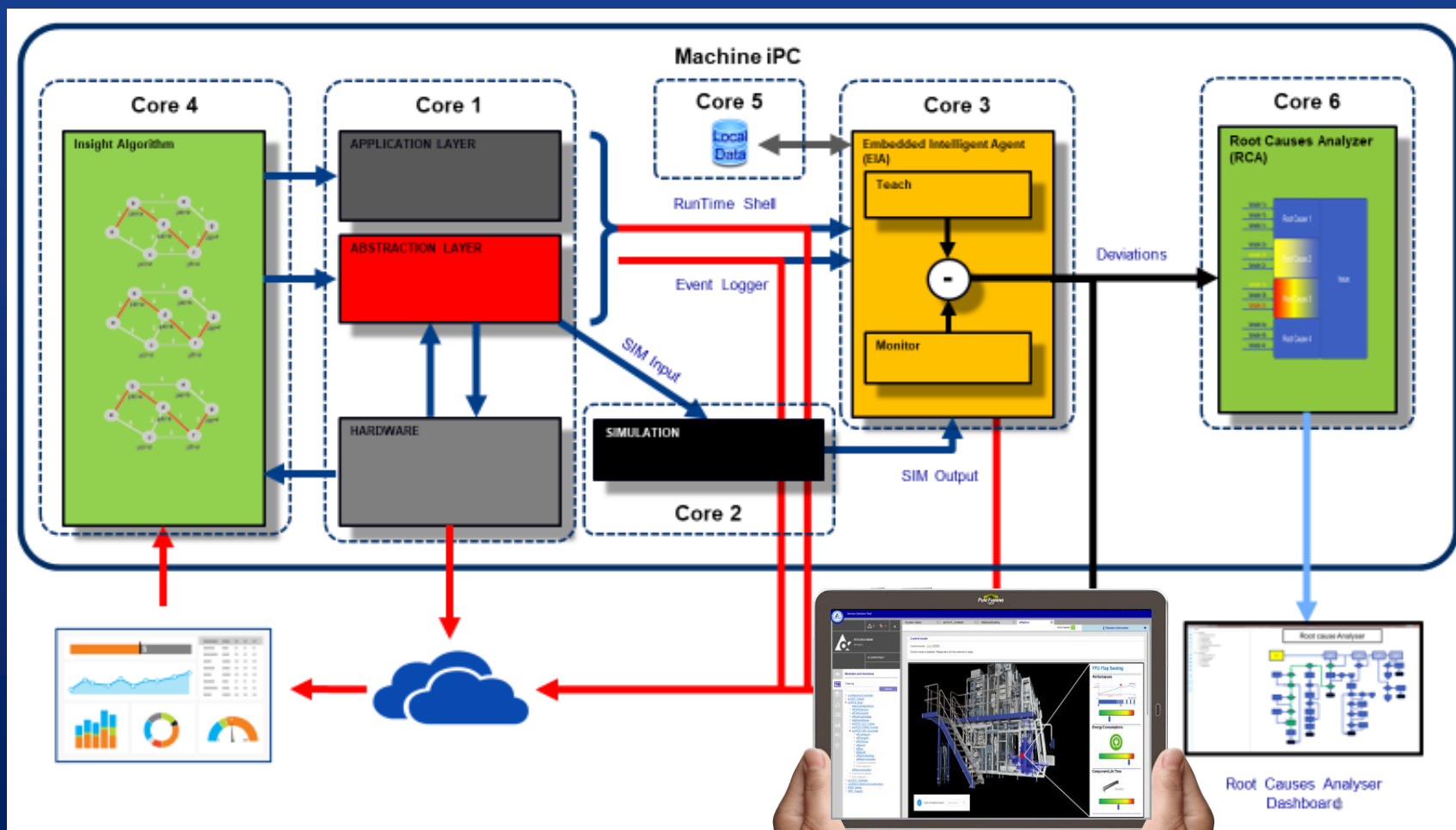


Streaming in

out



The "Ultimate" Control



Some Hurdles to Overcome



- Sensors technology – methods, robustness, accuracy
- Customer Cost – Investment & Operations
- Understanding – Data → Knowledge → Solution
- Development Cost
- New machine vs. installed base



What Does This Mean?



Testing the Tesla autopilot
(self driving mode)
Attribution:
Marc van der Chijs, [Flickr](#)



99.9999X%



Thank You!